



# WHITE MOUSE II



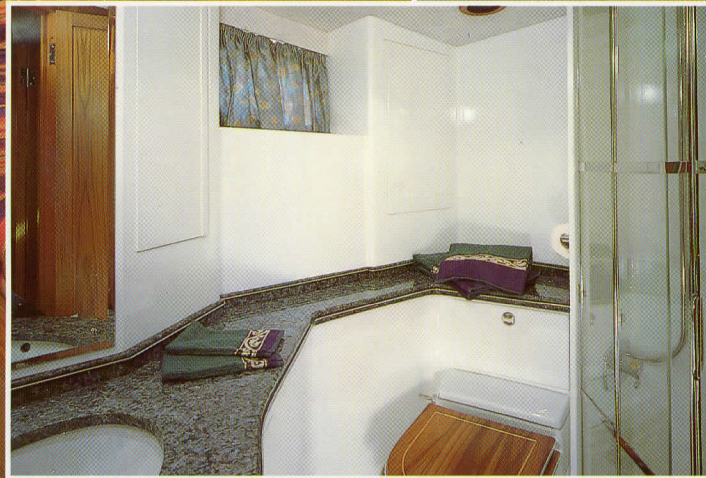
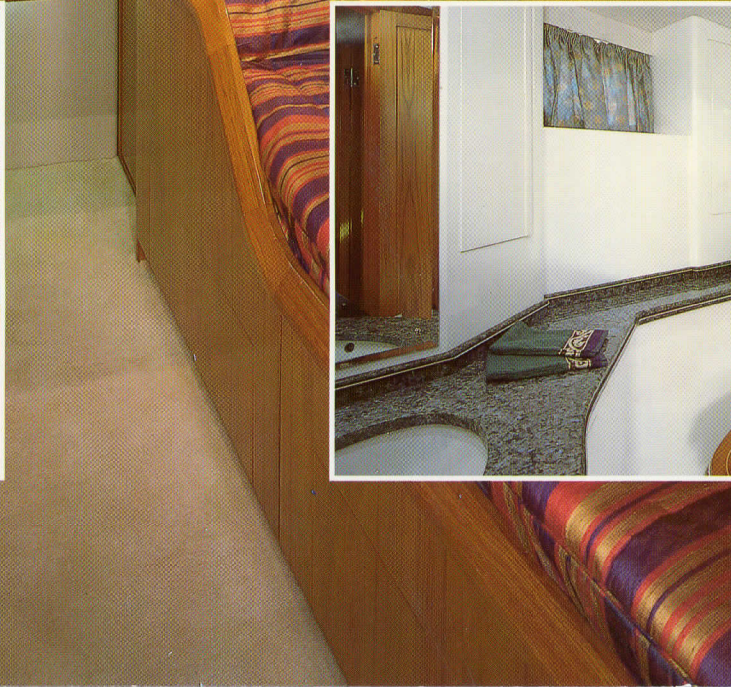


Originally built in 1963 by Philip and Son of Dartmouth, this double skin mahogany planked vessel has spent the last 5 years undergoing a complete re-building and restoration program. White Mouse II was re-launched in May 1996 and is now one of the finest motor yachts of her size on the market.

Offering accommodation for six in two double cabins and one twin with two bathrooms she has been refurbished using the finest materials gathered from around the world. Details abound: from specially commissioned door handles throughout the boat to individual area-controlled air conditioning; from hand crafted cutlery storage unit to infra-red controlled CD sound system. White Mouse II is now ready for a great summer's cruising.









# SPECIFICATION

Name	White Mouse II
Registered	Dartmouth
Type	Philips 53 TSMY
Year of manufacture	1963
Re-fitted	1990-1996
L.O.A.	56ft 6ins
Beam	14ft 6ins
Draft	4ft 6ins
Displacement	35 Tonnes est.
Speed	10 knots cruise est.
Engines	2 x 6 Cylinder Perkins Diesel
Generator	Onan 14Kva / 230V AC Generator
Fuel capacity	800 Gallons
Fresh water	800 Gallons
Air conditioning	4 x Cruisair 16,000 BTU
Heater	Eberspacher 4.8 Kw
Stabilisers	Vosper Thornycroft "Naiad"

For full specification see enclosed

